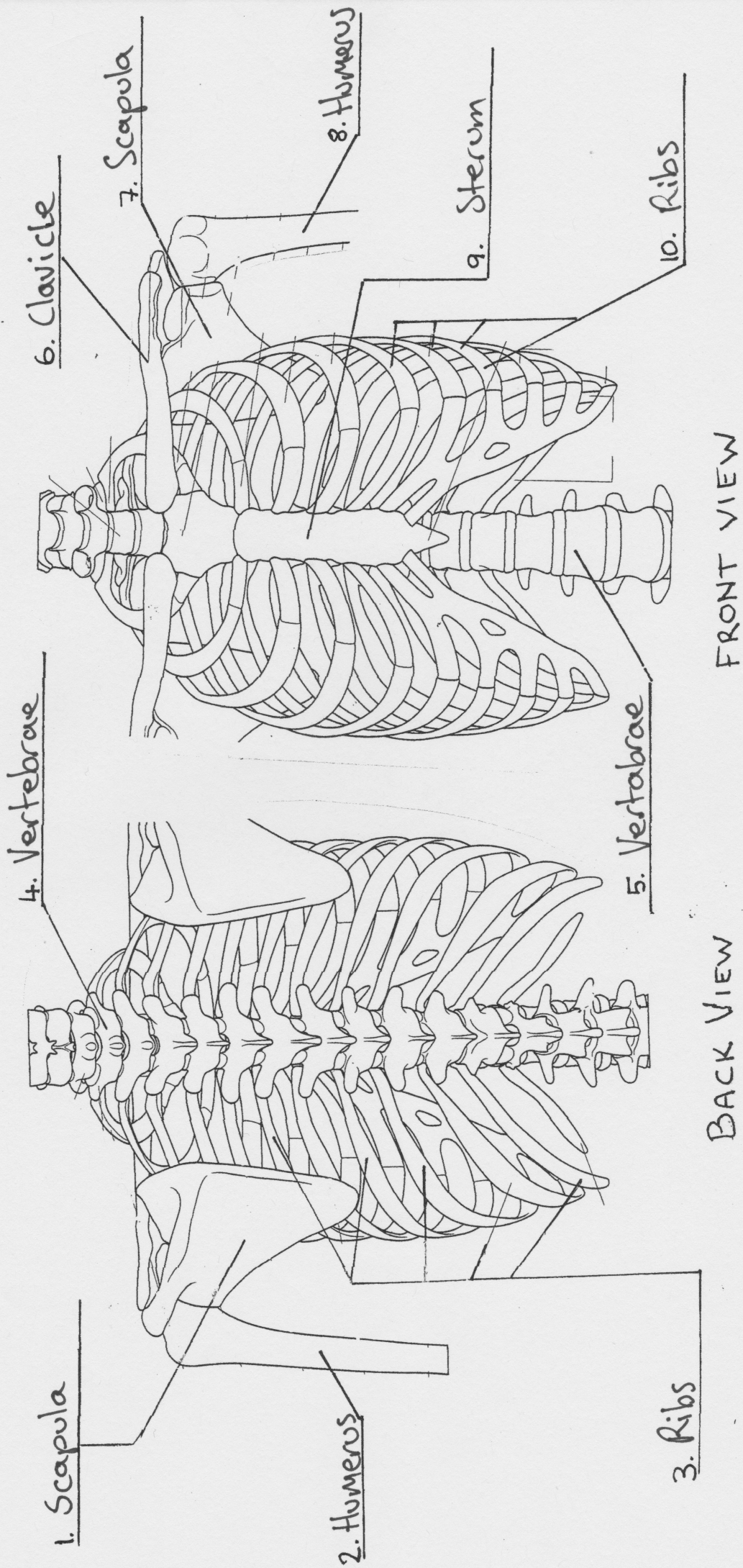


# ANSWERS

## THORAX

THE SKELETON OF THE THORAX HAS SEVERAL IMPORTANT ROLES: IT PROTECTS THE HEART AND LUNGS; IT ACTS AS AN ANCHOR FOR MUSCLE ATTACHMENT; AND THE RIBS AND STERNUM MOVE TO CHANGE THE VOLUME OF THE THORAX DURING BREATHING.



BACK VIEW

FRONT VIEW